

# Going on a Word Hunt

Use this trail to help you explore lots of new words during your gallery visit.

1) There are lots of words you can use to describe what you see in the Clore Discovery Centre. Can you match these describing words to their opposite:

BIG	LIGHT
DARK	NEW
OLD	LOW
HIGH	CHEAP
SHINY	DULL
EXPENSIVE	LIGHT
SMOOTH	SMALL
HEAVY	ROUGH

2) The gallery is full of animals, can you match the right names to the animal in the pictures

RED DEER

SEAL

HIPPO

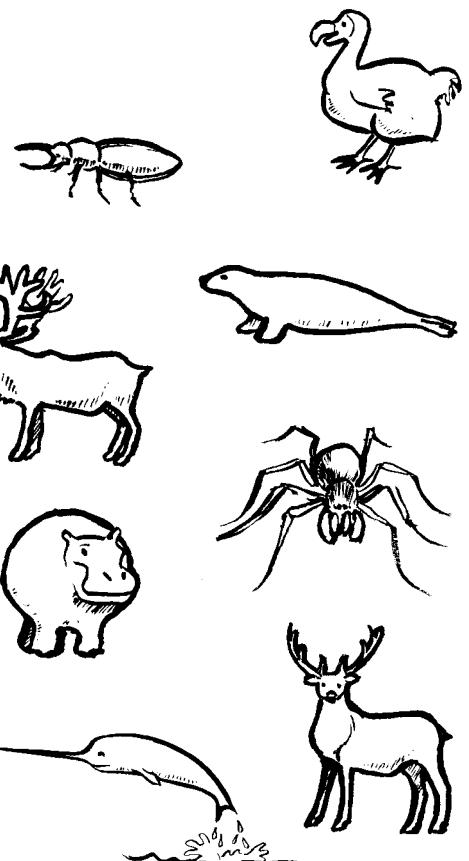
DODO

NARWHAL

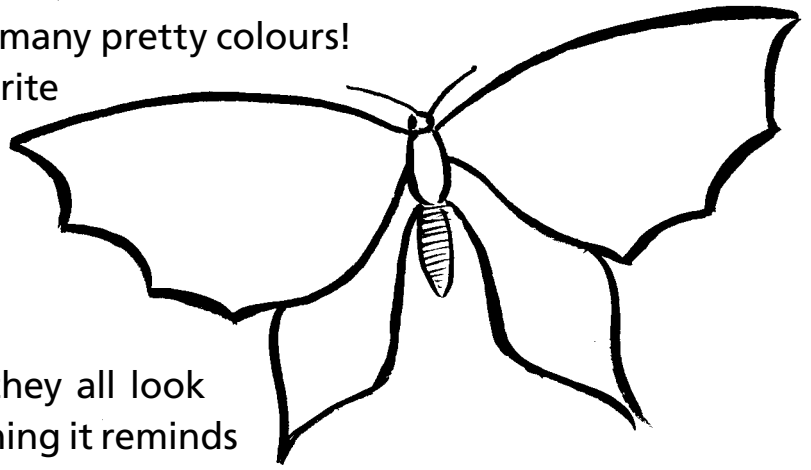
BEETLE

SPIDER

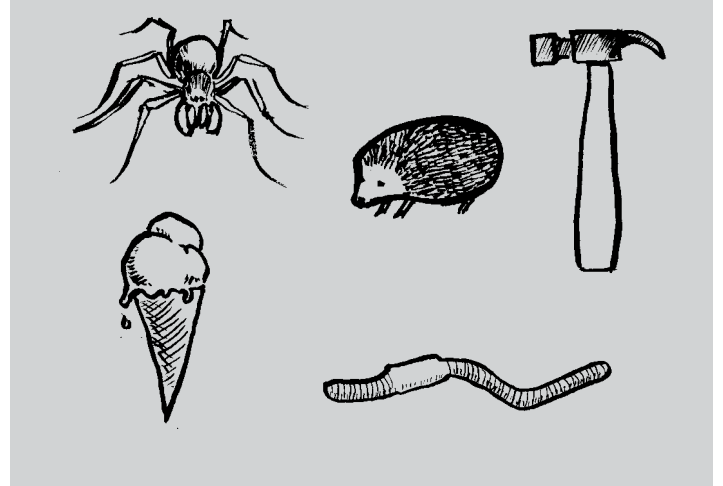
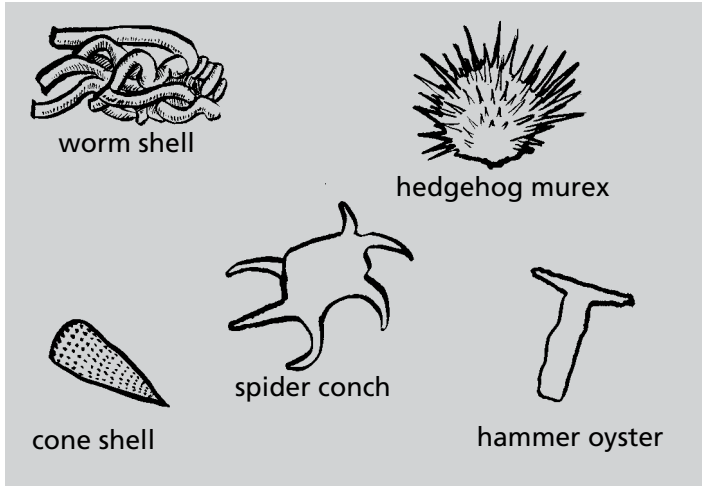
REINDEER



3) Look at the beautiful butterflies, so many pretty colours!  
Decorate your own butterfly and write  
the names of the colours you have  
used.



4) Can you see the drawer of shells, they all look  
very strange. Match the shell to something it reminds  
you of.

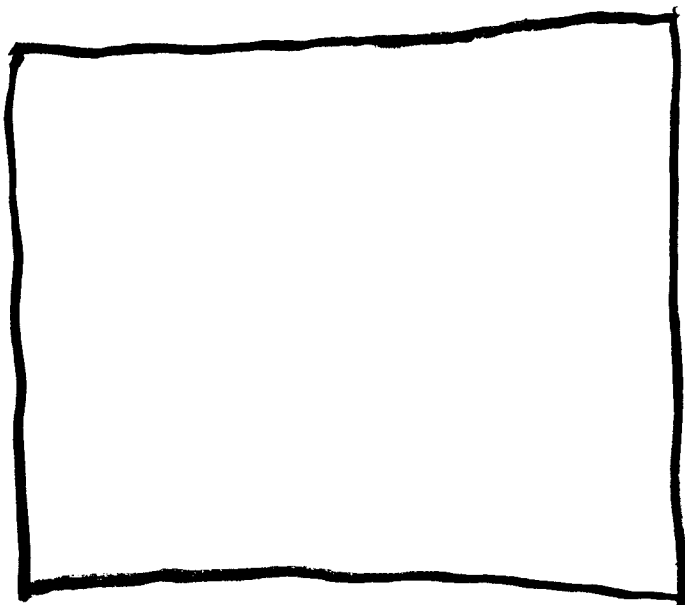


5) Mystery objects – can you match the clues to the right mystery object in the wall  
of cubes?

A hissing animal that's in a special jar \_\_\_\_\_

This was laid by a giant bird \_\_\_\_\_

A star shaped animal that lives in the sea \_\_\_\_\_



6) What is your favourite thing you've  
seen today? Draw it in the box and write  
its name